

AIN AL MAHA 



نعمة الطبيعة كل يوم

Nature's blessings
everyday



Abu Dhabi

أبو ظبي

Abu Dhabi is a meeting place for cultures, tastes, and experiences all alike. It's where East meets West, tradition meets trend, and yesterday meets tomorrow. It is our home and pride that flourishes within a vibrant community, world-class leisure and entertainment, and natural sceneries. Its culture is ingrained within us through the people we meet, the places we go, and the stories we tell. This is what defines us, this is Abu Dhabi.

أبو ظبي هي مكان التقاء الثقافات والأذواق والخبرات معًا. هنا يلتقي الشرق بالغرب، والأمس بالغد، وتزامن التقاليد حاضرنّا. إنها منزلنا وفخرنا الذي يزدهر بمجتمعه النابض بالحياة، ويتميز بوسائل الترفيه العالمية، والبيئة الطبيعية الخلابة. ثقافتها متأصلة فينا عبر الأشخاص الذين نلتقي بهم كل يوم، والأماكن التي نذهب إليها، والقصص التي نرويها. فإن روح أبو ظبي هي روحنا.

الطبيعة
والرعاية
جزيرة الجبل

- 01 حديقة قرم
02 الجبل
03 مركز مبيعات
جزيرة الجبل

Nature and
Nurture
Jubail Island

- 01 Jubail
02 Mangrove Park
03 Jubail Island
Sales Centre

التسلية
والترفيه
جزيرة ياس

- 03 ياس مول
04 حلبة مرسى ياس
05 عالم فيراري

Leisure and
Entertainment
Yas Island

- 03 Yas Mall
04 Yas Marina Circuit
05 Ferrari World

الفنون
والثقافة
جزيرة السعديات

- 06 متحف اللوفر أبو ظبي
07 جامعة نيويورك أبو ظبي
08 جد السعديات

Arts and
Culture
Saadiyat Island

- 06 Louvre Abu Dhabi
07 NYU Abu Dhabi
08 Hidd Al Saadiyat

النقل
والسياحة

- 09 ميناء زايد
10 مطار أبو ظبي

Transport
and Tourism

- 09 Zayed Port
10 Abu Dhabi Airport

الابتكار
والبحث

- 11 مدينة مصدر
12 كلية الإمارات للتكنولوجيا
13 جامعة زايد

Innovation
and Research

- 11 Masdar City
12 Women's College of
Technology
13 Zayed University

المجتمع
والدين

- 14 مدينة زايد الرياضية
15 جامع الشيخ زايد الكبير
16 واحة الكرامة
17 مركز أبو ظبي
الوطني للمعارض

Community
and Faith

- 14 Zayed Sport City
15 Sheikh Zayed Grand Mosque
16 Wahat Al Karama
17 Adnec

التجارة
والتبادل التجاري
جزيرة أبو ظبي

- 18 جزيرة الريم
19 جزيرة المارية
20 كورنيش أبوظبي
21 القصر الرئاسي
لدولة الإمارات
العربية المتحدة
22 أبراج الاتحاد
23 قصر الإمارات
24 قصر الحصن
25 ديوان ولي العهد

Commerce
and Trade
Abu Dhabi Island

- 18 Al Reem Island
19 Al Maryah Island
20 Abu Dhabi Corniche
21 UAE Presidential Palace
22 Etihad Towers
23 Emirates Palace
24 Qasr Al Hosn
25 Crown Prince Court

Arts and Culture
الفنون والثقافة

Nature and Nurture
الطبيعة والرعاية

Leisure and
Entertainment
التسلية والترفيه

Transport
and Tourism
النقل
والسياحة

Innovation and Research
الابتكار والبحث

Community and Faith
المجتمع والدين

Commerce and Trade
التجارة والتبادل التجاري

JUBAIL ISLAND



جزيرة الجبيل
JUBAIL ISLAND



Discovery and Connectivity بيئة مثالية للتواصل والاستكشاف

Jubail Island's beauty is a natural escape from the hustle of the city. Its prime location exudes a sense of belonging, wellness, and connectivity to its community, inviting them to delve deeper into its nature and explore its profound serenity.

تتناغم في جزيرة الجبيل المساحات الخضراء مع نعومة الرمال البيضاء، بعيدًا عن صخب المدينة وازدحامها. تنمّي جزيرة الجبيل في ساكنيها روح الترابط والانتماء في أحضان الطبيعة الخلابة التي تساعد على التأمل والانغماس في هدوئها وصفائها.



Wellness and Activity

حيث تجتمع العافية مع الحيوية

The Island provides inspiring healing and restorative ripple effects on the mind and body. Living in Jubail Island is an opportunity to de-stress, rejuvenate, and live a healthier lifestyle. It is a chance to get back in touch with nature and yourself.

تقدم جزيرة الجبيل نمط حياة عصري فريد لا مثيل له، ينعكس على ساكنها بشكل إيجابي عند تملك منزل أحلامهم وسط بيئة صحية وأمنة، تتخللها مجموعة مذهلة من وسائل الراحة مع مستوى عالٍ من الخصوصية والأمان. جزيرة الجبيل هي المكان الأنسب لعائلة تبحث عن موقع استثنائي غني بالطبيعة والراحة.

Keeping up with the Community Spirit

الحياة بكل تفاصيلها

Jubail Island creates an idyllic harmony between the serenity of nature and the vibrancy of a modern city. It is the perfect cultural hub booming with annual events, poetry and theatre shows, celebrations and festivals that keep the community spirit alive.

تخلق جزيرة الجبيل تناغمًا شاعريًا بين صفاء الطبيعة وحيوية المدينة، وتعدّ مركزًا ثقافيًا مثاليًا مزدهرًا بالفعاليات مثل الأمسيات الشعرية، والمسرحيات والمهرجانات السنوية التي تجمع أفراد مجتمعا في أحضان الطبيعة الساحرة.





كل ما تتمناه في مكان واحد

A city within a city, Jubail Island is a breathtaking destination designed to inspire a life of discovery to uncover the blessings of nature, and to feel a sense of belonging. It is a destination that meets your true self.

جزيرة الجبيل هي مدينة في قلب مدينة، تلبي كافة احتياجاتك ضمن أجواء الطبيعة الأخاذة مع مجموعة متكاملة من المرافق التي تضمن لك ولعائلتك حياة راقية وممتعة.



Jubail Island The Master Plan

جزيرة الجبيل المخطط الرئيسي

1. Marfaa Al Jubail
مرفاً الجبيل
2. Nad Al Dhabbi
ند الظبي
3. Seef Al Jubail
سيف الجبيل
4. Ain Al Maha
عين المها
5. Souk Al Jubail
سوق الجبيل

Introducing

AIN AL MAHA 



Ain Al Maha

عين المها

Ain Al Maha unleashes the true spirit of Jubail Island.
Its prime location offers exclusive living, where the vibrancy
of a modern city and serenity of a pristine island life embrace
a community like no other.

عين المها هي روح جزيرة الجبيل والوجهة المثالية التي تقدم
لساكنيها المعنى الحقيقي للانسجام. موقعها الاستثنائي
يجمع بين نمط الحياة العصري وهدوء طبيعة الجزيرة المحمية
ليتمتع مجتمعا بإطلالات ساحرة تشعرهم بالسكون.



Life is an Adventure

مغامرات الحياة

Ain Al Maha's prime location around rich coastal landscapes with secluded beaches and waterfront shores, is the perfect place for soaking in fun activities outdoors.

Splash into all the excitement at the beach or paddle around with your kayak around stunning views of evergreen mangroves. Prepare for days packed with adventure steps away from your forever home.

عين المها واحة تتناغم فيها المساحات الخضراء مع نعومة
الرمال البيضاء، حيث يمتزج جمال الطبيعة مع المستويات
الاستثنائية للترفيه في الهواء الطلق.
شارك البهجة مع أحبائك على الشواطئ الممتعة أو عبر جولة
في قوارب الكاياك بين أشجار القرم الساحرة. استعد لأيام مليئة
بالأنشطة والمغامرات التي لا تُنسى وعلى بعد خطوات فقط من
منزلك.





- 
- 1 Ain Al Maha Gateway
بوابة عين المها
- 2 Causeway
ممر مرتفع
- 3 Private School
مدرسة خاصة
- 4 Mosque
مسجد
- 5 Community Centre
مركز مجتمعي
- 6 Community Park
حديقة مجتمعية
- 7 Estuary Park
حديقة المصببات المائية
- 8 Channel
قناة
- 9 Clinic
عيادة
- 10 Palace
قصر
- 11 Apartments
شقق
- 12 Buffer to Highway
مسار معزول
عن الطريق السريع

V i l l a s

AIN AL MAHA





منزل مثالي ومناظر آسرة

Surrounded by thousands of mangrove trees, picturesque estuaries and a sparkling waterfront, Ain Al Maha villas overlook the bay with incredible views of a thriving ecosystem amidst a vibrant community. The villas are an ideal home characterized by state-of-the-art architecture, lavish space, and modern designs suitable for luxurious and exceptional lifestyles in a low-density environment.

تتوسط فلل عين المها الآلاف من أشجار القرم والطبيعة الخلابة،
مع إطلالات متلائية على الخليج. تتميز الفلل بتصاميمها
العصرية المستوحاة من الطبيعة والتي تتوفر بمساحات
مختلفة ومعايير عالمية توفر أسلوب حياة فاخر واستثنائي
للعائلة ضمن بيئة سعيدة وهادئة ومنخفضة الكثافة.





4 Bedroom Villa

Type V4



Front Facade

4 Bedroom Villa

Type V4



Back Facade

4 Bedroom Villa Type V4



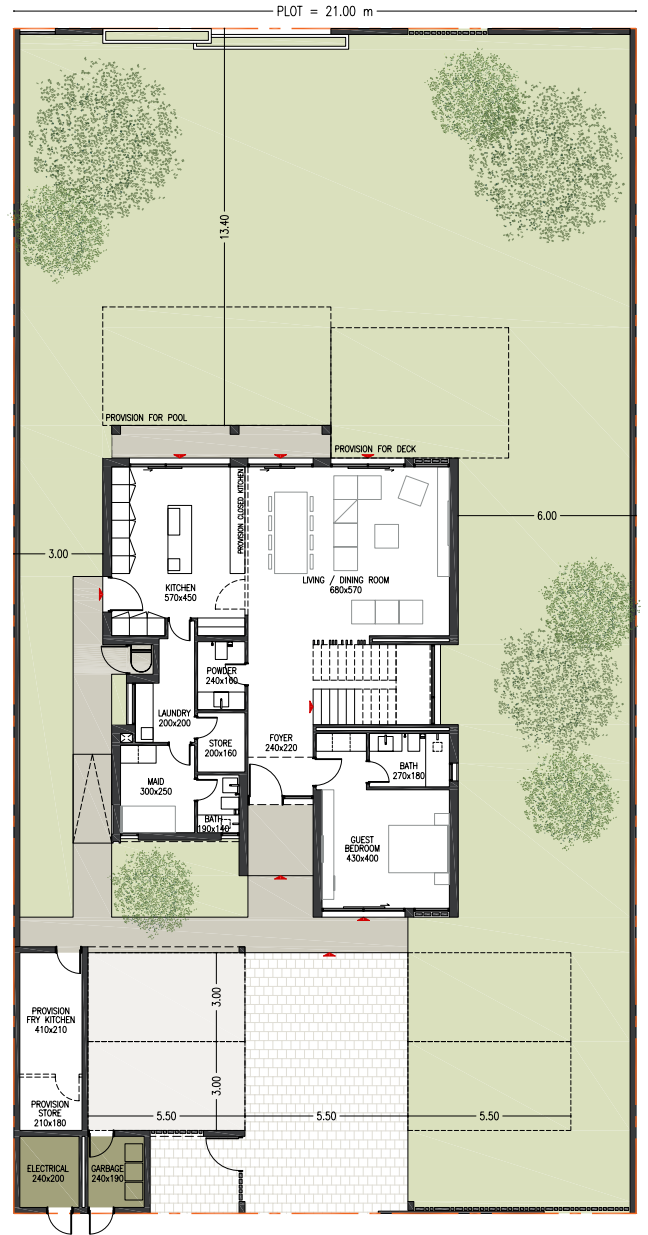
Interior

4 Bedroom Villa

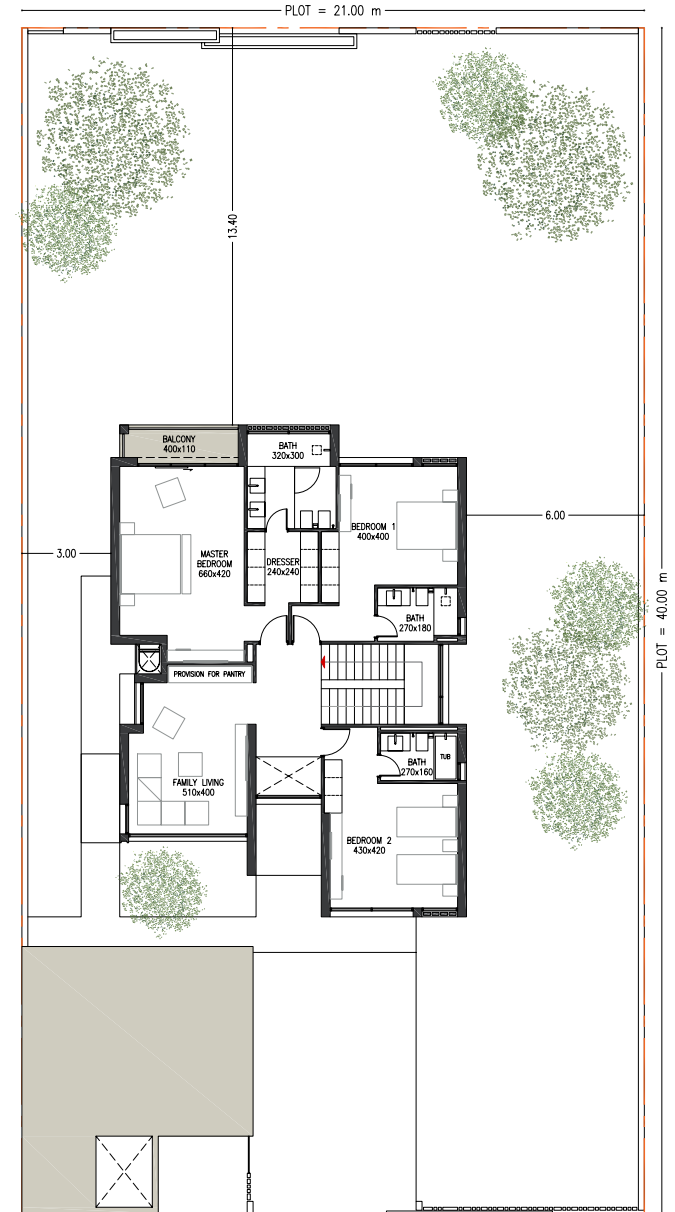
Type V4

Typology: 4 Bed Villa
 Number of Floors: G+1
 GSA: 337 m²
 Plot Area (Min): 775 m²
 Plot Area (Max): 853 m²

Ground Floor



First Floor



Disclaimer: All room dimensions are in metric and measured to structural elements and exclude wall finishes and construction tolerances. All dimensions have been provided by our consultant architects. All materials, dimensions, drawing features and amenities are approximate at the time of printing. Actual area may vary from stated area. Drawing not to scale E&EO. The developer reserves the right to make revisions to the floor plans and any features, materials, dimensions, drawings and amenities mentioned in this brochure without notice. Actual area may vary from stated area.

4 Bedroom Villa

Type V4 Select



Front Facade

4 Bedroom Villa

Type V4 Select



Back Facade

4 Bedroom Villa

Type V4 Select



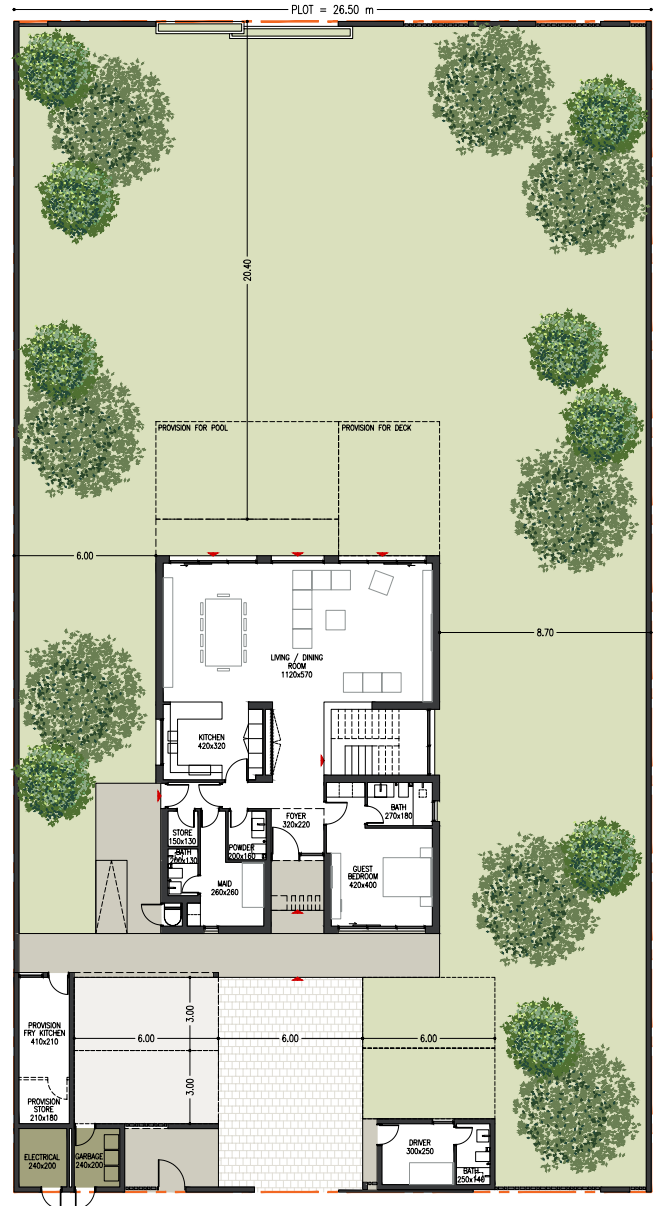
Interior

4 Bedroom Villa

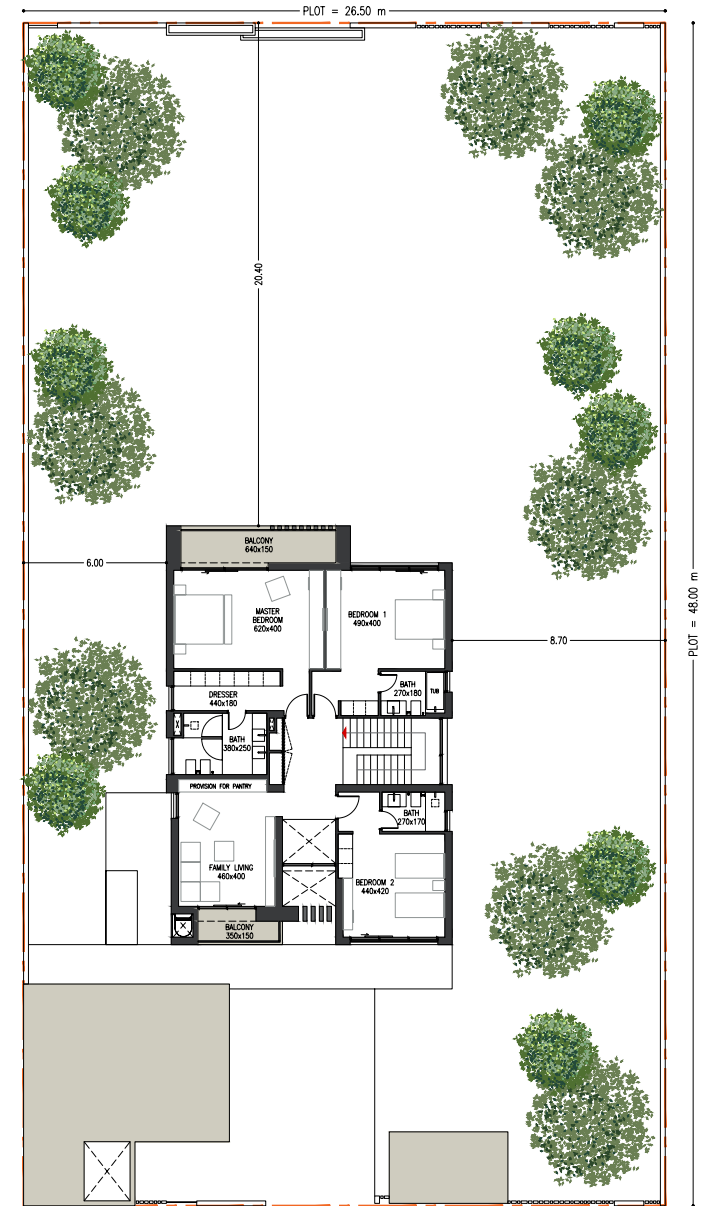
Type V4 Select

Typology: 4 Bed Villa
 Number of Floors: G+1
 GSA: 377 m²
 Plot Area (Min): 922 m²
 Plot Area (Max): 1,072 m²

Ground Floor



First Floor



Disclaimer: All room dimensions are in metric and measured to structural elements and exclude wall finishes and construction tolerances. All dimensions have been provided by our consultant architects. All materials, dimensions, drawing features and amenities are approximate at the time of printing. Actual area may vary from stated area. Drawing not to scale E&EO. The developer reserves the right to make revisions to the floor plans and any features, materials, dimensions, drawings and amenities mentioned in this brochure without notice. Actual area may vary from stated area.

4 Bedroom Villa

Type V4 Executive



Front Facade

4 Bedroom Villa

Type V4 Executive



Back Facade

4 Bedroom Villa

Type V4 Executive



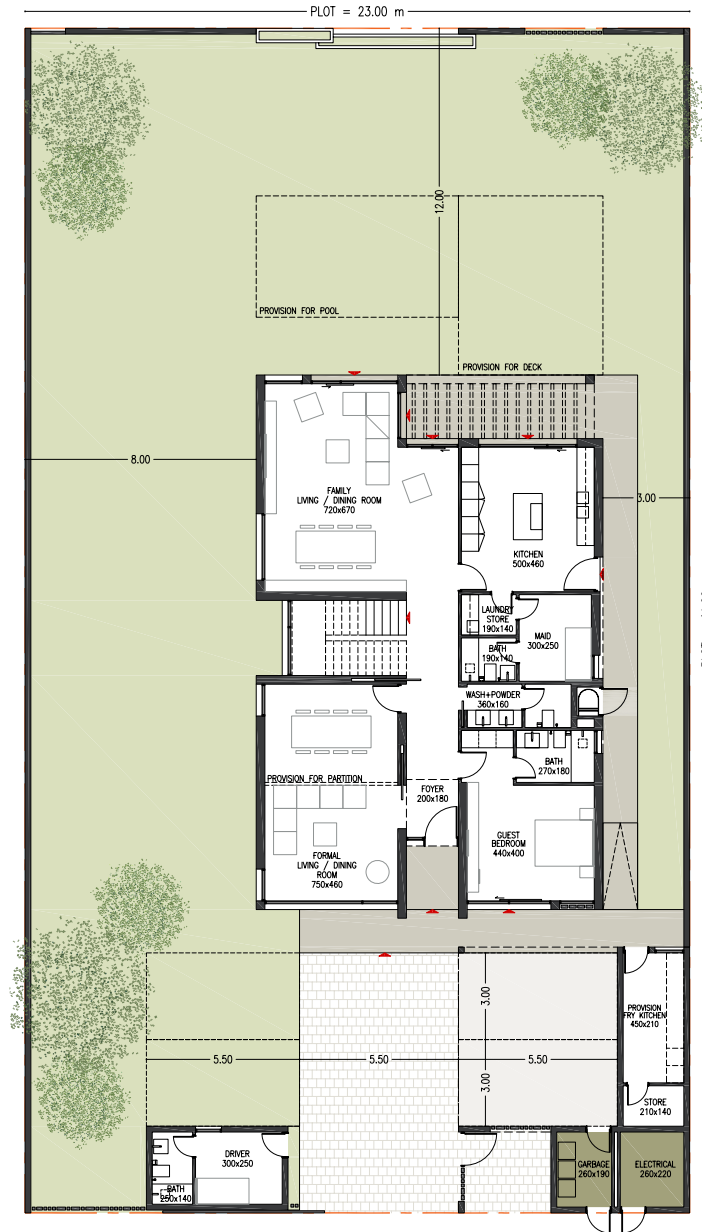
Interior

4 Bedroom Villa

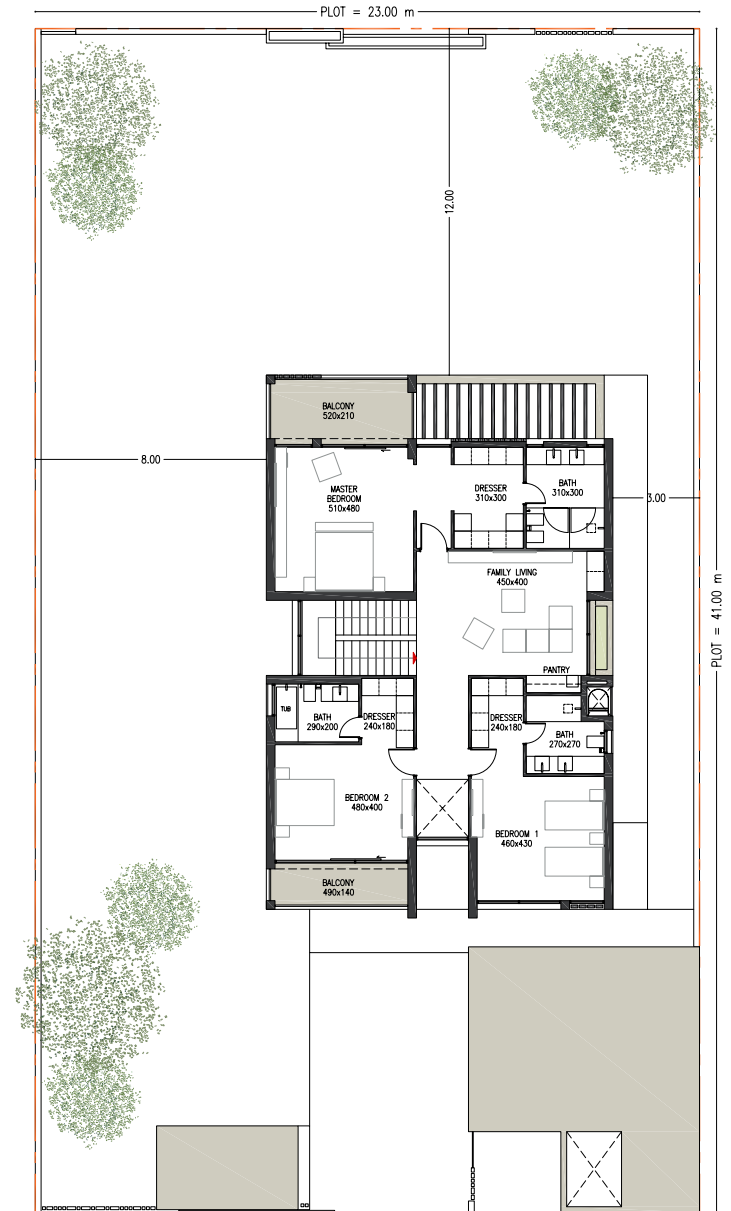
Type V4 Executive

Typology: 4 Bed Villa
 Number of Floors: G+1
 GSA: 423 m²
 Plot Area (Min): 830 m²
 Plot Area (Max): 1,084 m²

Ground Floor



First Floor



Disclaimer: All room dimensions are in metric and measured to structural elements and exclude wall finishes and construction tolerances. All dimensions have been provided by our consultant architects. All materials, dimensions, drawing features and amenities are approximate at the time of printing. Actual area may vary from stated area. Drawing not to scale E&O. The developer reserves the right to make revisions to the floor plans and any features, materials, dimensions, drawings and amenities mentioned in this brochure without notice. Actual area may vary from stated area.

5 Bedroom Villa

Type V5



Front Facade

5 Bedroom Villa

Type V5



Back Facade

5 Bedroom Villa

Type V5

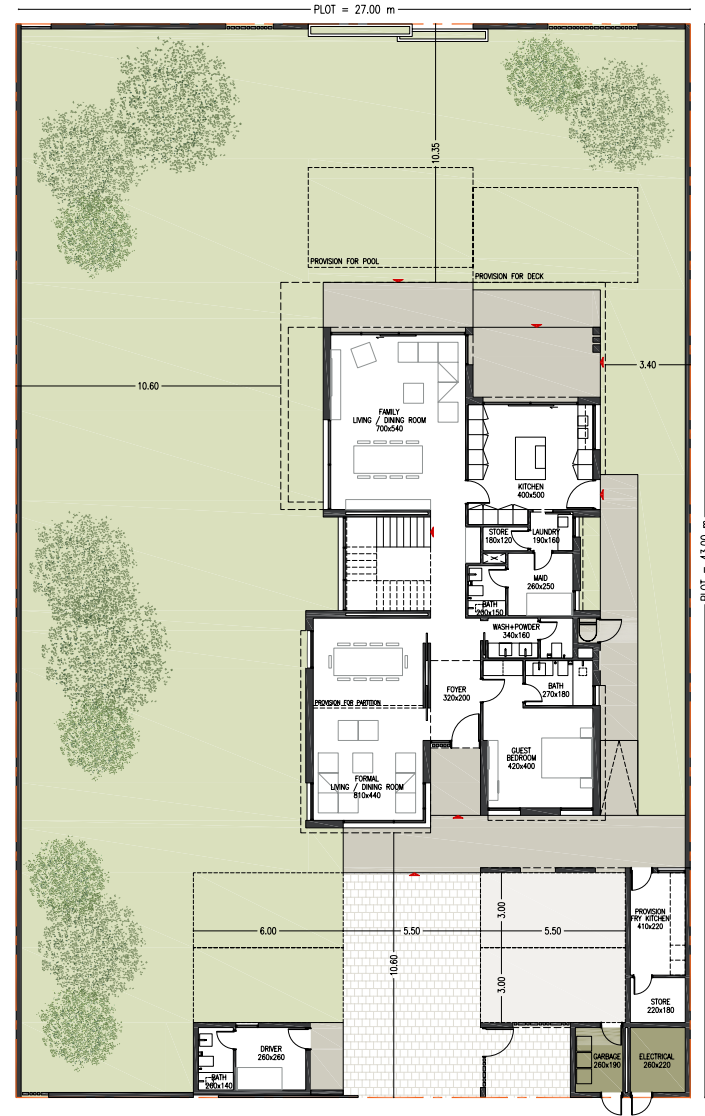


Interior

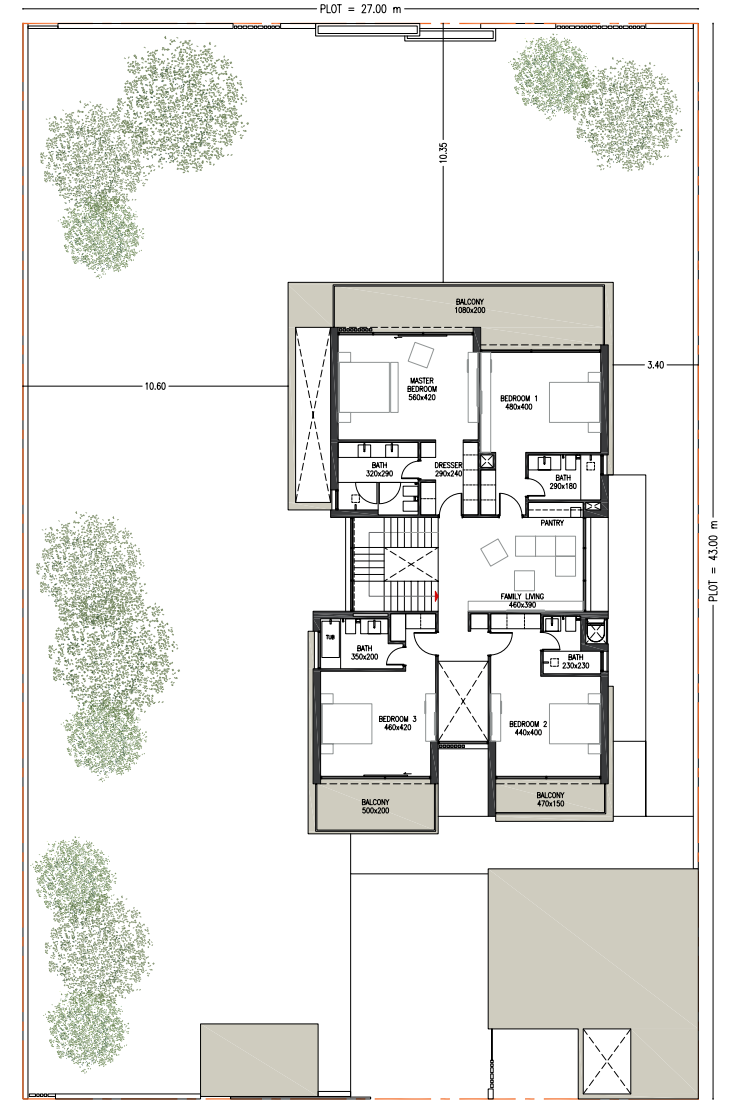
5 Bedroom Villa Type V5

Typology: 5 Bed Villa
Number of Floors: G+1
GSA: 478 m²
Plot Area (Min): 935 m²
Plot Area (Max): 1,568 m²

Ground Floor



First Floor



Disclaimer: All room dimensions are in metric and measured to structural elements and exclude wall finishes and construction tolerances. All dimensions have been provided by our consultant architects. All materials, dimensions, drawing features and amenities are approximate at the time of printing. Actual area may vary from stated area. Drawing not to scale E&EO. The developer reserves the right to make revisions to the floor plans and any features, materials, dimensions, drawings and amenities mentioned in this brochure without notice. Actual area may vary from stated area.

5 Bedroom Villa

Type V5 Executive



Front Facade

5 Bedroom Villa

Type V5 Executive



Back Facade

5 Bedroom Villa

Type V5 Executive



Interior

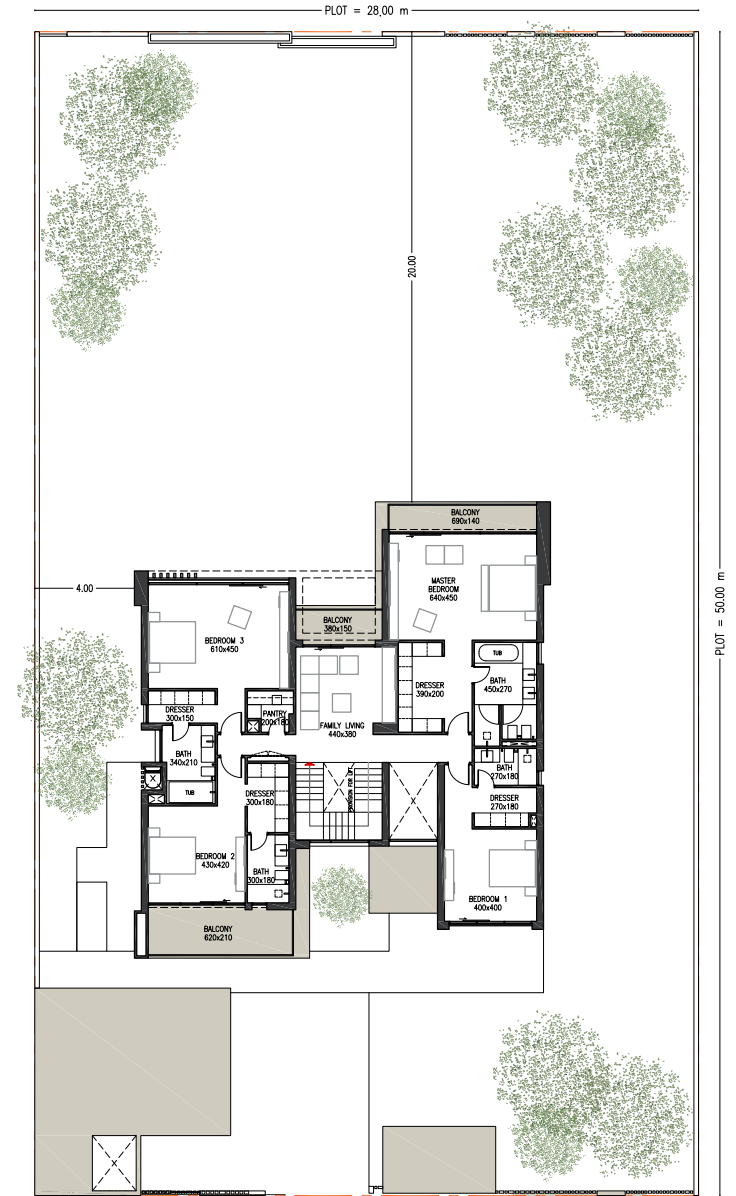
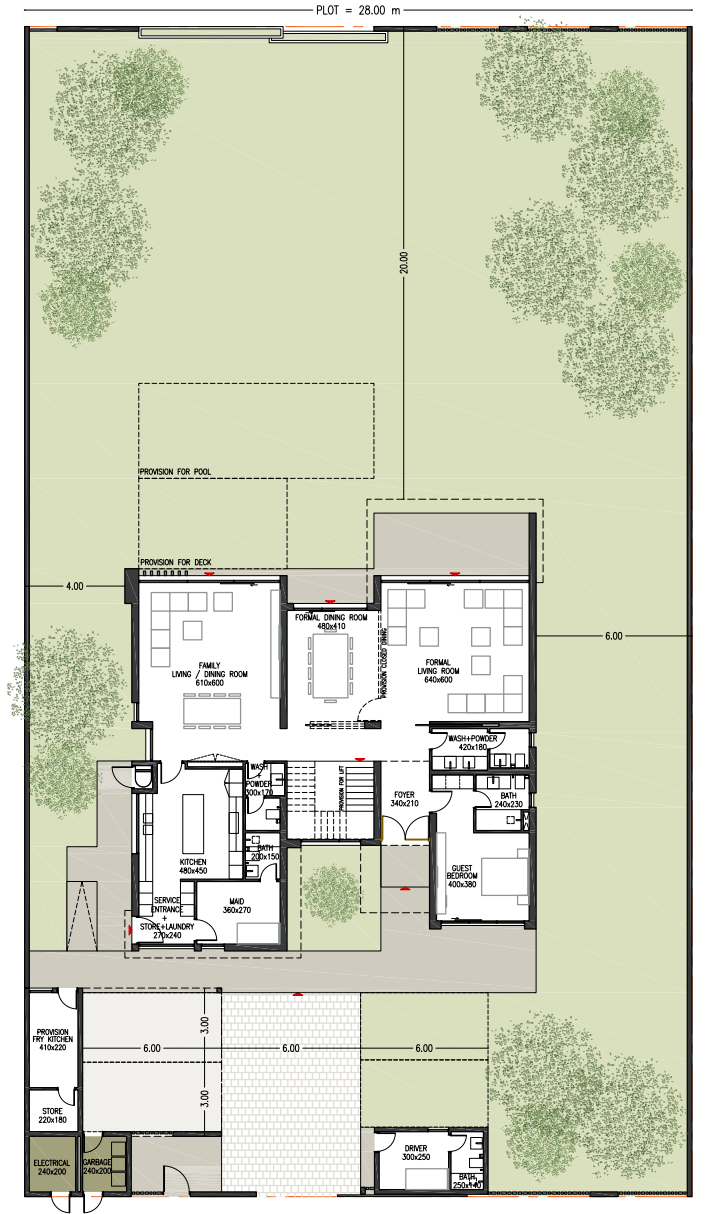
5 Bedroom Villa

Type V5 Executive

Typology: 5 Bed Villa
Number of Floors: G+1
GSA: 528 m²
Plot Area (Min): 1,274 m²
Plot Area (Max): 1,619 m²

Ground Floor

First Floor



Disclaimer: All room dimensions are in metric and measured to structural elements and exclude wall finishes and construction tolerances. All dimensions have been provided by our consultant architects. All materials, dimensions, drawing features and amenities are approximate at the time of printing. Actual area may vary from stated area. Drawing not to scale E&EO. The developer reserves the right to make revisions to the floor plans and any features, materials, dimensions, drawings and amenities mentioned in this brochure without notice. Actual area may vary from stated area.

5 Bedroom Villa

Type V5 MED



Front Facade

5 Bedroom Villa

Type V5 MED



Back Facade

5 Bedroom Villa

Type V5 MED



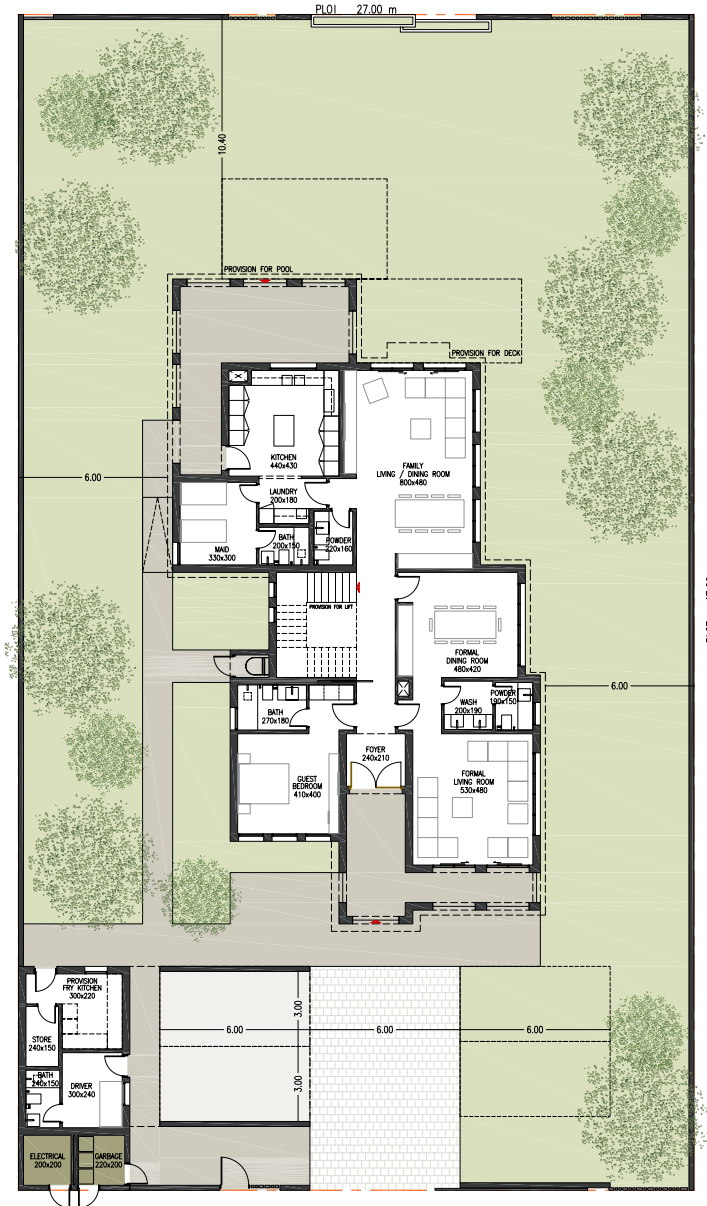
Interior

5 Bedroom Villa

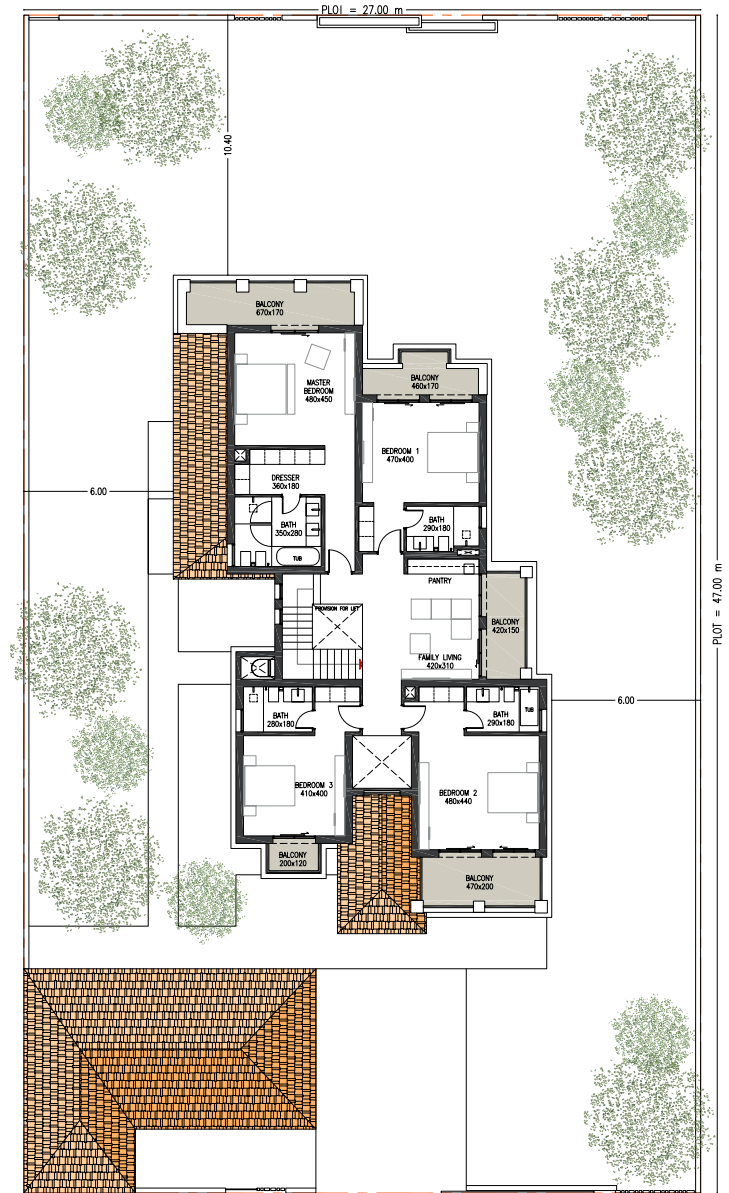
Type V5 MED

Typology: 5 Bed Villa
 Number of Floors: G+1
 GSA: 549 m²
 Plot Area (Min): 1,409 m²
 Plot Area (Max): 1,498 m²

Ground Floor



First Floor



Disclaimer: All room dimensions are in metric and measured to structural elements and exclude wall finishes and construction tolerances. All dimensions have been provided by our consultant architects. All materials, dimensions, drawing features and amenities are approximate at the time of printing. Actual area may vary from stated area. Drawing not to scale E&O. The developer reserves the right to make revisions to the floor plans and any features, materials, dimensions, drawings and amenities mentioned in this brochure without notice. Actual area may vary from stated area.

5 Bedroom Villa

Type V5 Select



Front Facade

5 Bedroom Villa

Type V5 Select



Back Facade

5 Bedroom Villa

Type V5 Select



Interior

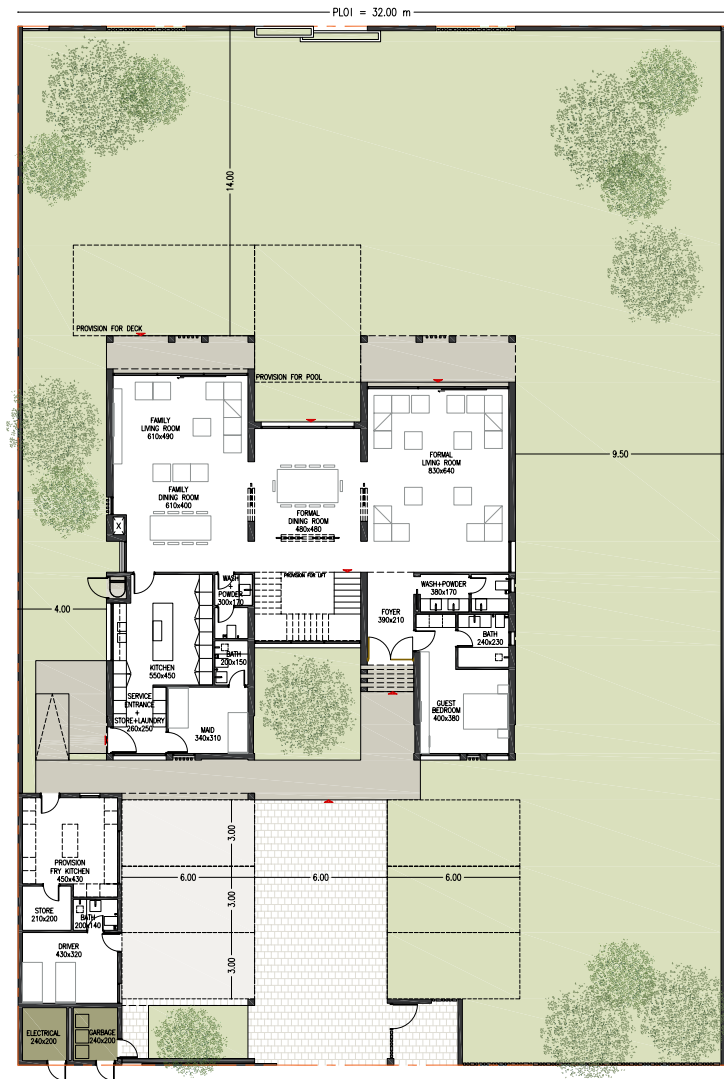


5 Bedroom Villa

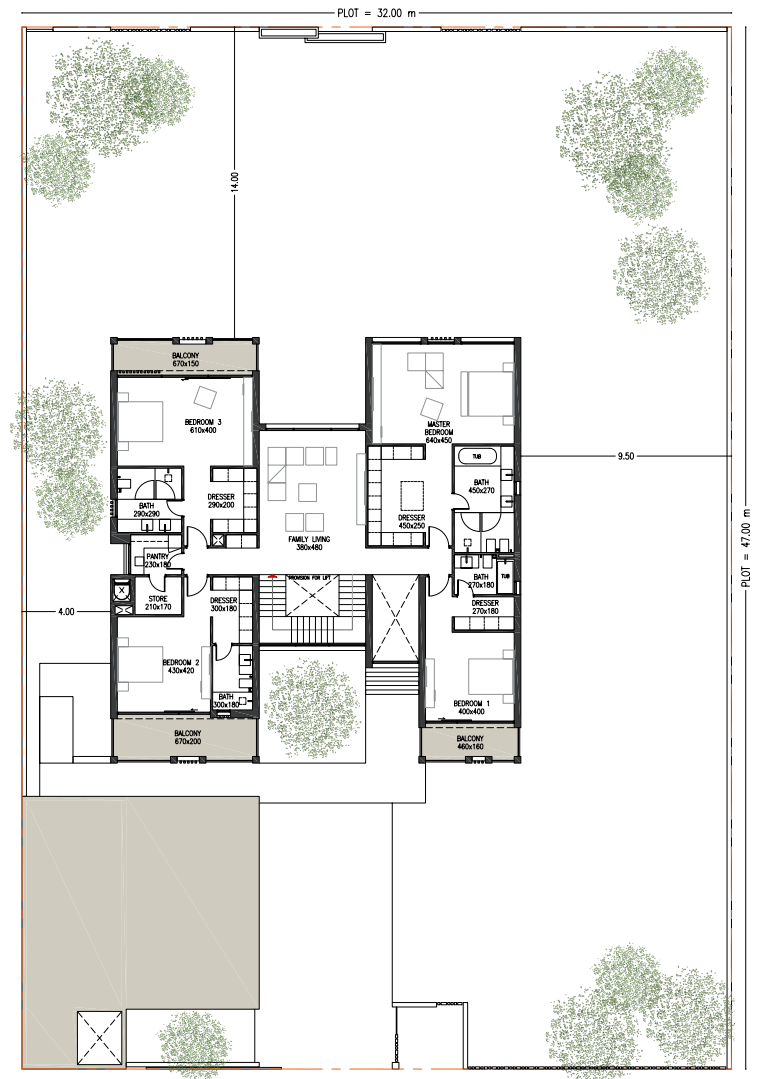
Type V5 Select

Typology: 5 Bed Villa
 Number of Floors: G+1
 GSA: 619 m²
 Plot Area (Min): 1,228 m²
 Plot Area (Max): 1,876 m²

Ground Floor



First Floor



5 Bedroom Villa

Type V5 MED Elite



Front Facade

5 Bedroom Villa

Type V5 MED Elite



Back Facade

5 Bedroom Villa

Type V5 MED Elite

Interior

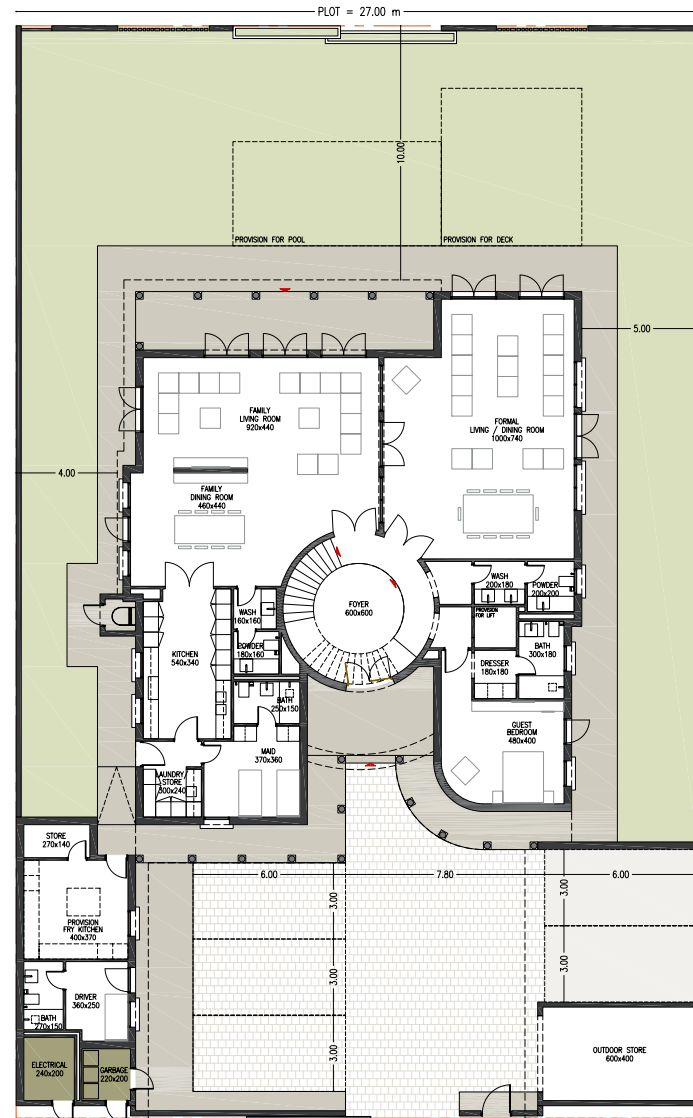


5 Bedroom Villa

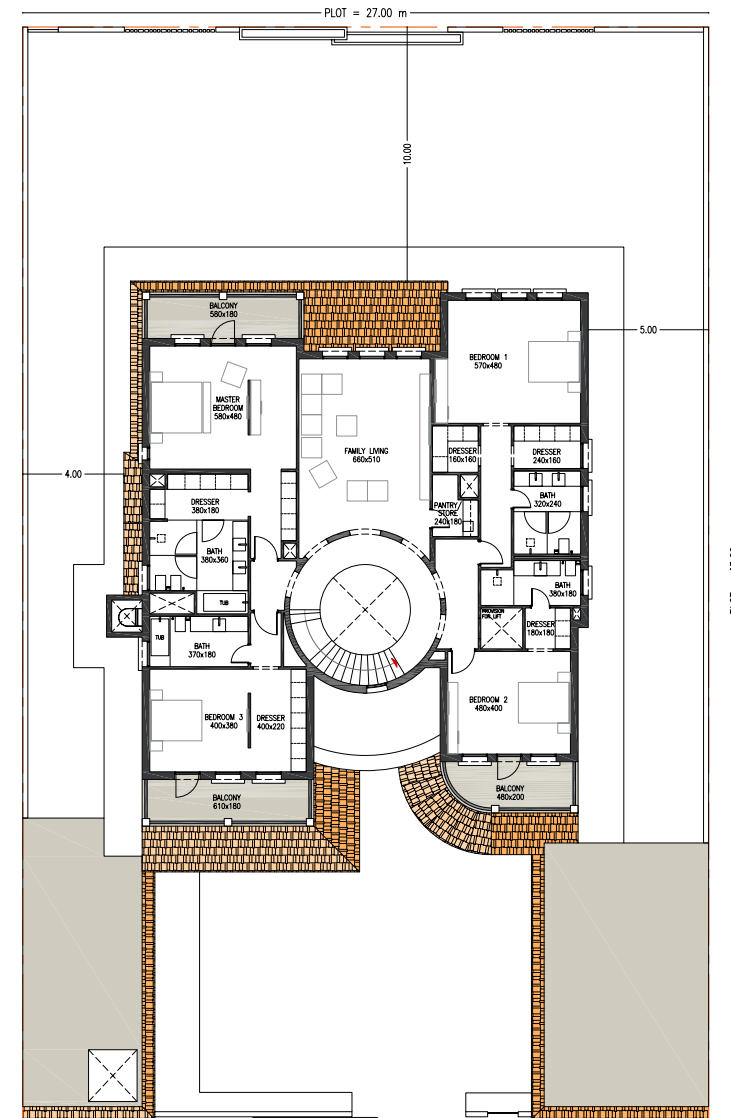
Type V5 MED Elite

Typology: 5 Bed Villa
 Number of Floors: G+1
 GSA: 717 m²
 Plot Area (Min): 1,415 m²
 Plot Area (Max): 1,805 m²

Ground Floor



First Floor



Disclaimer: All room dimensions are in metric and measured to structural elements and exclude wall finishes and construction tolerances. All dimensions have been provided by our consultant architects. All materials, dimensions, drawing features and amenities are approximate at the time of printing. Actual area may vary from stated area. Drawing not to scale E&EO. The developer reserves the right to make revisions to the floor plans and any features, materials, dimensions, drawings and amenities mentioned in this brochure without notice. Actual area may vary from stated area.

6 Bedroom Villa

Type V6 Select



Front Facade

6 Bedroom Villa

Type V6 Select



Back Facade

6 Bedroom Villa

Type V6 Select



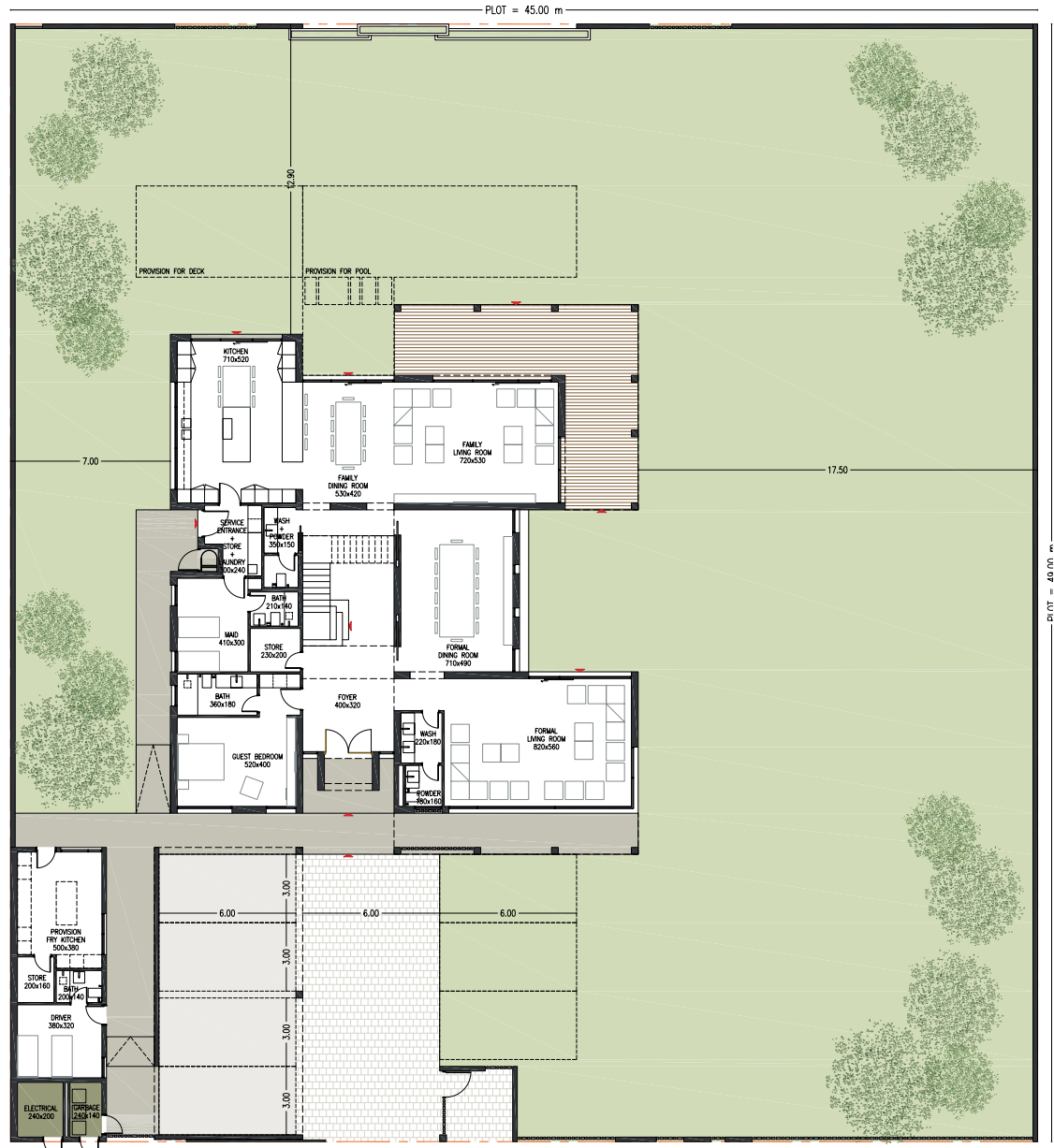
Interior

6 Bedroom Villa

Type V6 Select

Typology: 6 Bed Villa
Number of Floors: G+1
GSA: 813 m²
Plot Area (Min): 1,805 m²
Plot Area (Max): 2,001 m²

Ground Floor



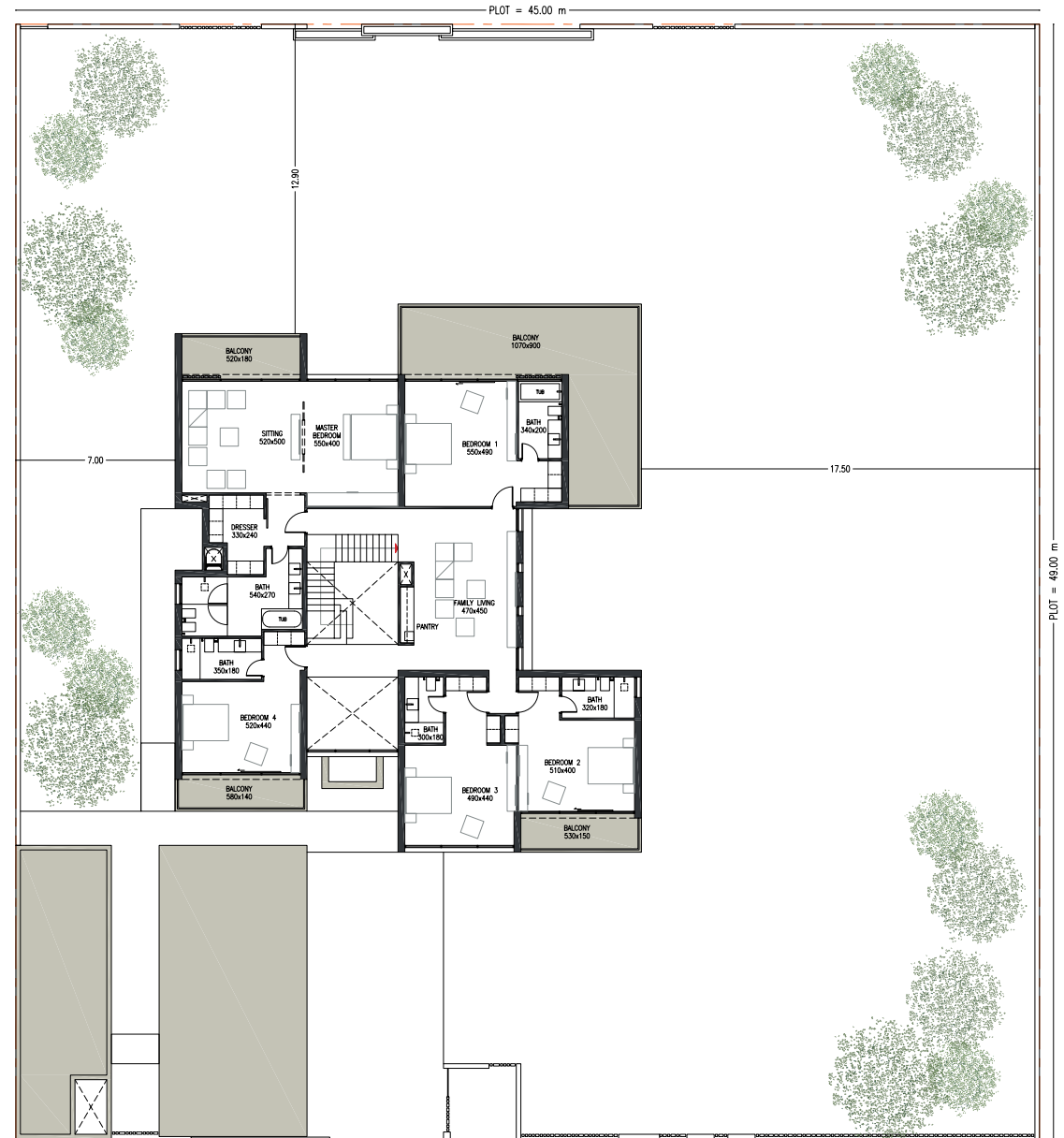
Disclaimer: All room dimensions are in metric and measured to structural elements and exclude wall finishes and construction tolerances. All dimensions have been provided by our consultant architects. All materials, dimensions, drawing features and amenities are approximate at the time of printing. Actual area may vary from stated area. Drawing not to scale E&O. The developer reserves the right to make revisions to the floor plans and any features, materials, dimensions, drawings and amenities mentioned in this brochure without notice. Actual area may vary from stated area.

6 Bedroom Villa

Type V6 Select

Typology: 6 Bed Villa
 Number of Floors: G+1
 GSA: 813 m²
 Plot Area (Min): 1,805 m²
 Plot Area (Max): 2,001 m²

First Floor



Disclaimer: All room dimensions are in metric and measured to structural elements and exclude wall finishes and construction tolerances. All dimensions have been provided by our consultant architects. All materials, dimensions, drawing features and amenities are approximate at the time of printing. Actual area may vary from stated area. Drawing not to scale E&EO. The developer reserves the right to make revisions to the floor plans and any features, materials, dimensions, drawings and amenities mentioned in this brochure without notice. Actual area may vary from stated area.

6 Bedroom Villa

Type V6 Elite



Front Facade

6 Bedroom Villa

Type V6 Elite



Back Facade

6 Bedroom Villa

Type V6 Elite



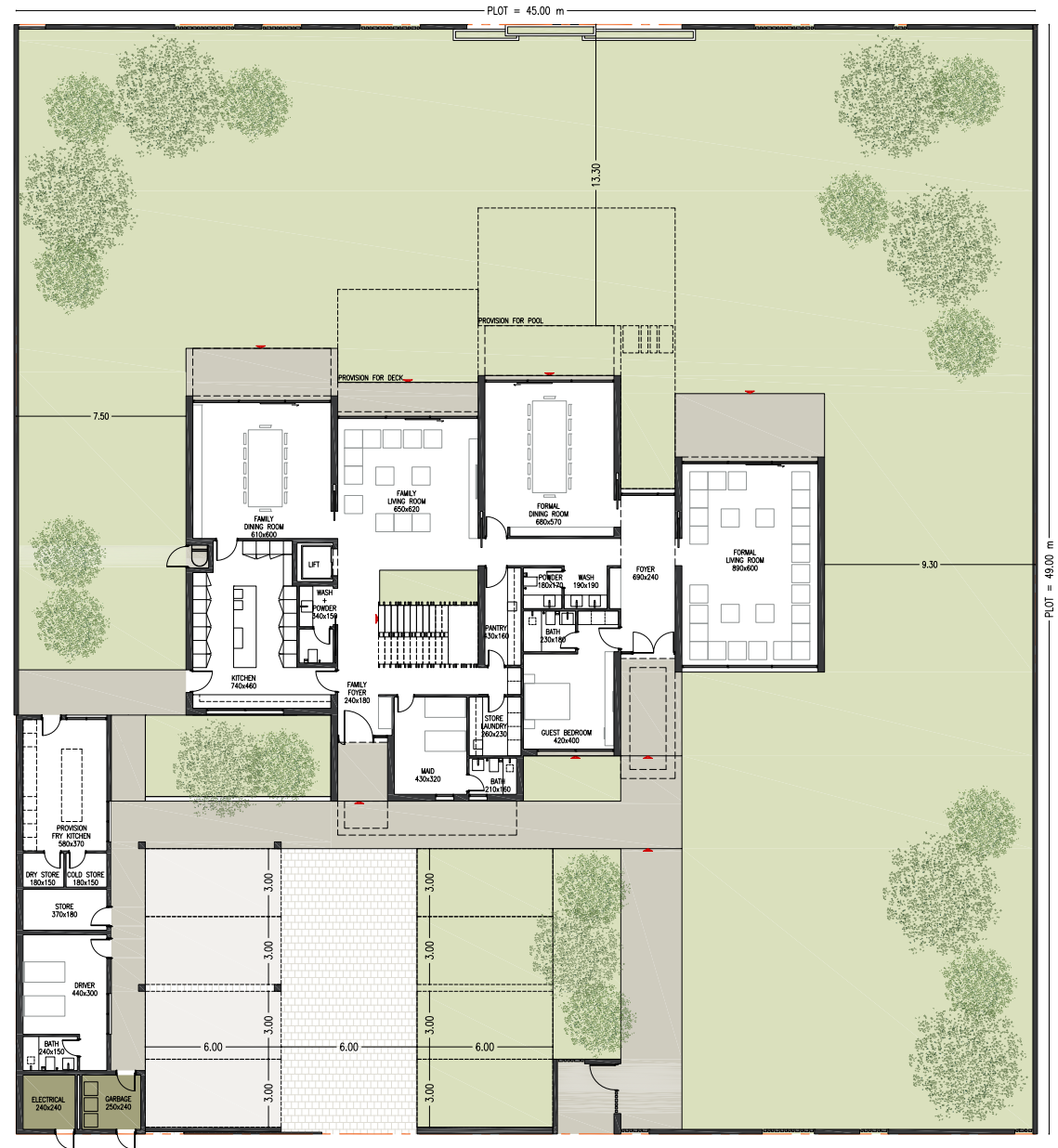
Interior

6 Bedroom Villa

Type V6 Elite

Typology: 6 Bed Villa
Number of Floors: G+1
GSA: 841 m²
Plot Area (Min): 2,020 m²
Plot Area (Max): 2,423 m²

Ground Floor



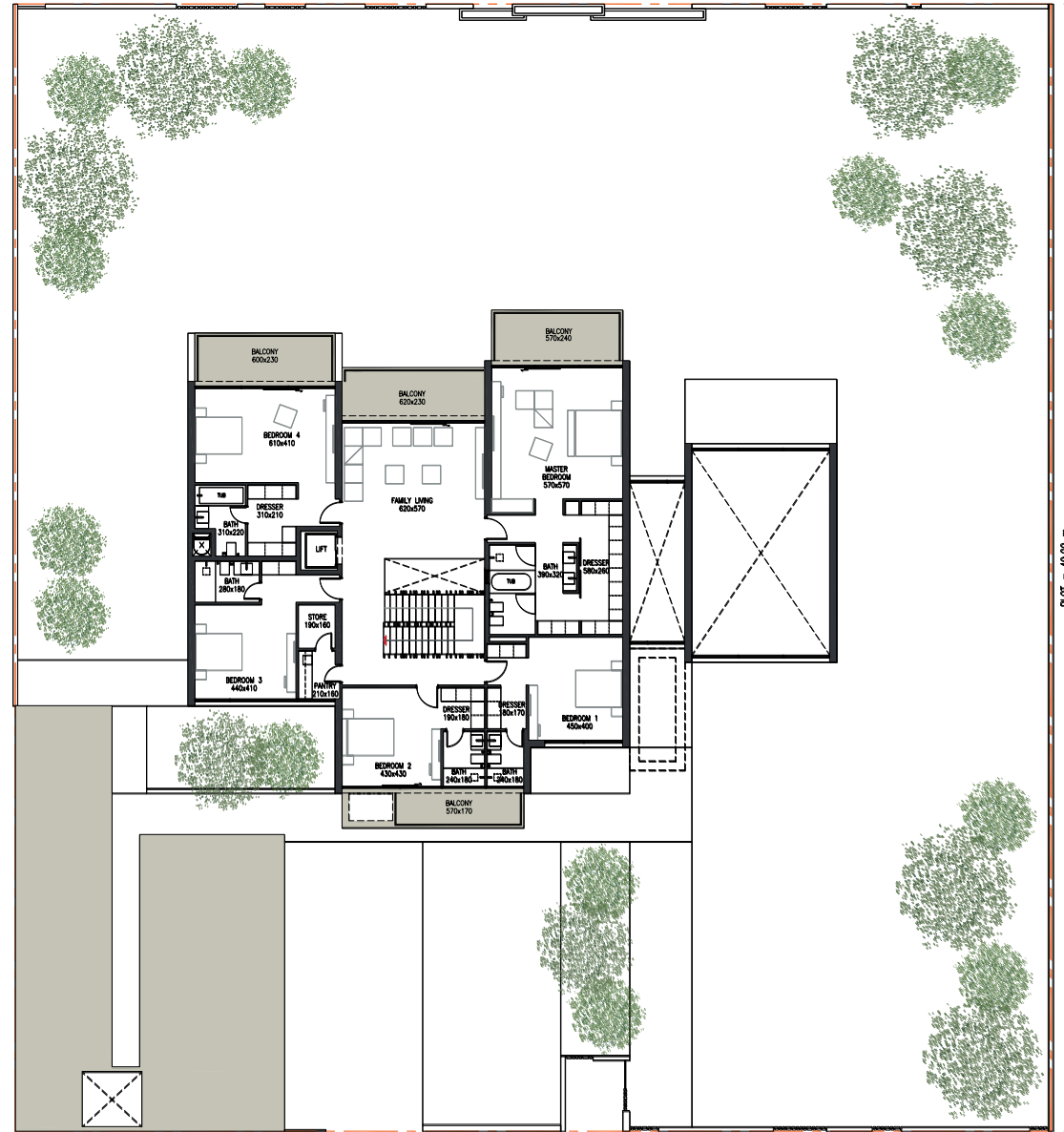
Disclaimer: All room dimensions are in metric and measured to structural elements and exclude wall finishes and construction tolerances. All dimensions have been provided by our consultant architects. All materials, dimensions, drawing features and amenities are approximate at the time of printing. Actual area may vary from stated area. Drawing not to scale E&O. The developer reserves the right to make revisions to the floor plans and any features, materials, dimensions, drawings and amenities mentioned in this brochure without notice. Actual area may vary from stated area.

6 Bedroom Villa

Type V6 Elite

Typology: 6 Bed Villa
Number of Floors: G+1
GSA: 841 m²
Plot Area (Min): 2,020 m²
Plot Area (Max): 2,423 m²

First Floor



Disclaimer: All room dimensions are in metric and measured to structural elements and exclude wall finishes and construction tolerances. All dimensions have been provided by our consultant architects. All materials, dimensions, drawing features and amenities are approximate at the time of printing. Actual area may vary from stated area. Drawing not to scale E&EO. The developer reserves the right to make revisions to the floor plans and any features, materials, dimensions, drawings and amenities mentioned in this brochure without notice. Actual area may vary from stated area.

